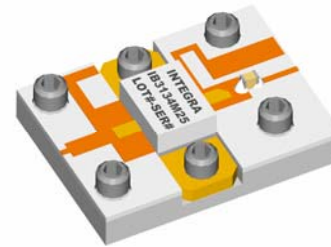


**S-Band Radar Transistor**

Part number IBP3134M25 is a 50 Ω matched high power pulsed radar pallet amplifier for S-Band radar systems operating over the instantaneous bandwidth of 3.1-3.4 GHz. Operating under the pulse conditions of 300µs pulse width and 10% duty cycle the pallet amplifier supplies a minimum of 25 watts of peak power over the frequency range of 3.1-3.4GHz. All devices are 100% screened for large signal RF parameters.



- Silicon Bipolar Technology
  - Ultra-high  $f_T$
- Class C Operation
  - High Efficiency
- Common Base Configuration
  - Single Power Supply
- Gold Metal
  - Maximum Reliability
- Emitter Ballasting
  - Optimum Thermal Distribution
- Impedance Matched to 50Ω
  - Ease of Use
- Pallet Carrier
  - Ni Plated Cu Carrier
- BeO Based Transistor Package
  - Unmatched Thermal Reliability

**TYPICAL DATA    TYPICAL DATA    TYPICAL DATA    TYPICAL DATA    TYPICAL DATA**

Device	Freq (MHz)	V <sub>CC</sub> (V)	P <sub>IN</sub> (W)	IRL (dB)	P <sub>OUT</sub> (W)	G <sub>P</sub> (dB)	I <sub>c</sub> (A)	Nc (%)	Droop (dB)
506445-2	3100	32.0	2.6	-18	33.7	11.1	2.10	50	-0.2
	3250	32.0	2.6	-18	33.1	11.1	2.10	49	-0.2
	3400	32.0	2.6	-24	30.6	10.7	2.10	45	-0.1

Pulse Format = 300µs, 10%

**MAXIMUM RATINGS**

Screen	Parameter	Symbol	Min	Max	Units	Test Conditions
BD	Collector-Emitter Voltage	$V_{CES}$	--	70	V	$V_{BE}=0V$ .
BD	Emitter-Base Voltage	$V_{EBO}$	--	3.5	V	--
BD	Storage Temperature Range	$T_{STG}$	-55	+150	°C	--
BD	Operating Junction Temperature Range	$T_J$	-55	+200	°C	--
Note	Screen 'BD' = parameter qualified By Design.					

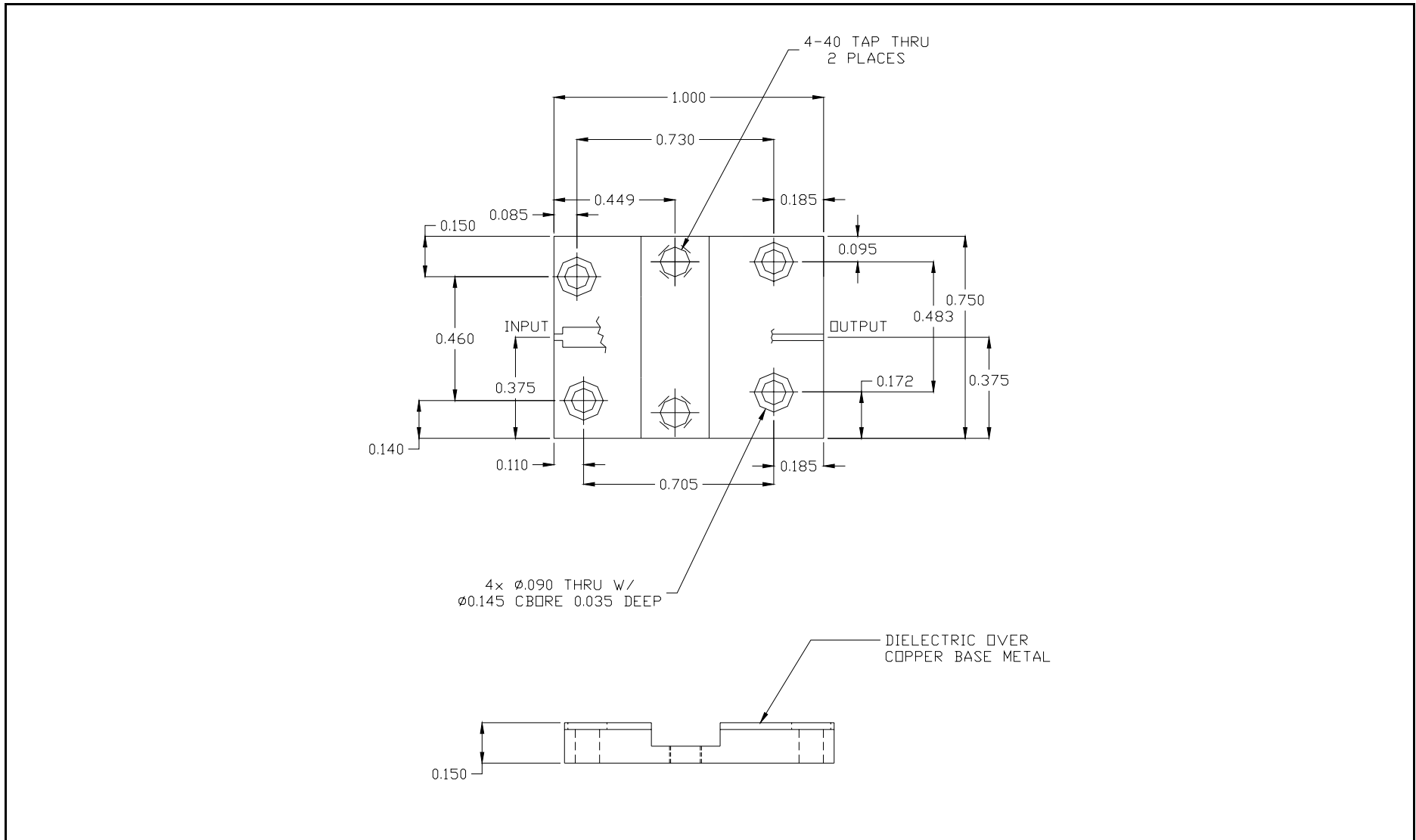
**THERMAL CHARACTERISTICS**

Screen	Parameter	Symbol	Min	Max	Units	Test Conditions
BD	Thermal Resistance per Device	$R_{TH(JC)}$	--	1.45	°C/W	$V_{CC}=V1$ , $PW=PW1$ , $DF=DF1$ , $T_F=25\pm5^\circ C$ , $P_{OUT}= 25W$ , $F=F3$ , Per transistor.
Note	Screen 'BD' = parameter qualified By Design.					

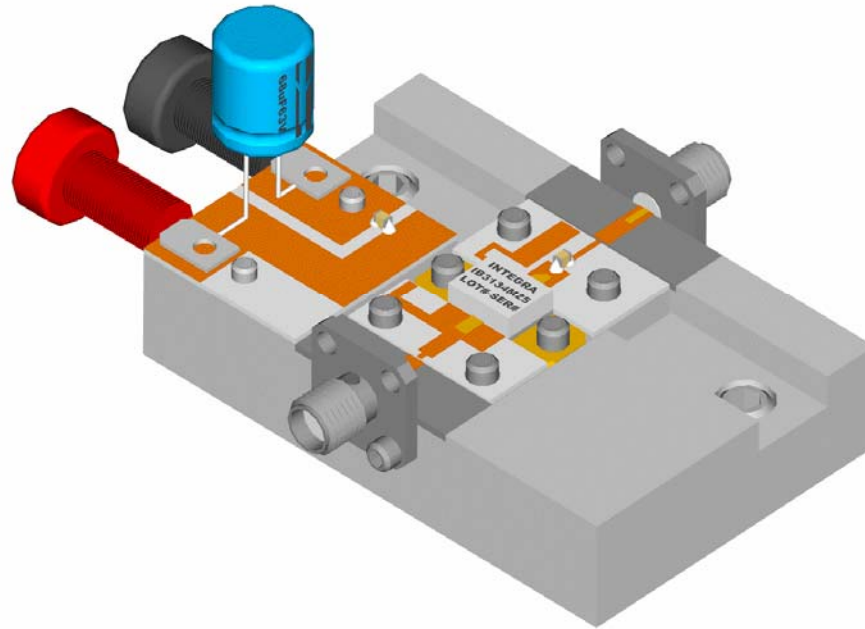
**RF ELECTRICAL CHARACTERISTICS**

Screen	Parameter	Symbol	Min	Max	Units	Test Conditions
100%	Input Return Loss	IRL	10	--	dB	$V_{CC}=V1, PW=PW1, DF=DF1, T_F=25\pm5^\circ C, P_{IN}=P_{IN}, F=F1, F2, F3.$
100%	Output Power	$P_O$	25	--	W	$V_{CC}=V1, PW=PW1, DF=DF1, T_F=25\pm5^\circ C, P_{IN}=P_{IN}, F=F1, F2, F3.$
100%	Collector Efficiency ( $P_O/I_C/V_{CC}$ )	$N_C$	40	--	%	$V_{CC}=V1, PW=PW1, DF=DF1, T_F=25\pm5^\circ C, P_{IN}=P_{IN}, F=F1, F2, F3.$
100%	Pulse Amplitude Droop	D	--	0.5	dB	$V_{CC}=V1, PW=PW1, DF=DF1, T_F=25\pm5^\circ C, P_{IN}=P_{IN}, F=F1, F2, F3.$
100%	Output Power Compression = $10 \cdot \text{LOG}(P_{OC}/P_O)$	OPC	-0.2	+0.70	dB	$P_{OC}$ measured with $P_{IN}$ increased by 0.5dB at $F=F1, F2, F3.$
100%	Output Power Flatness = $10 \cdot \text{LOG}(P_{OMAX}/P_{OMIN})$	OPF	--	1.0	dB	Calculate from $P_O$ at each frequency F.
100%	Stability into 1.5:1 VSWR	VSWR-S	--	--	--	$V_{CC}=V1, PW=PW1, DF=DF1, T_F=25\pm5^\circ C, P_{IN}=P_{IN}, F=F1, F2, F3.$ Rotate 1.5:1 output VSWR through 360° phase. No oscillatory or pulse break-up characteristics allowed on detected output pulse.
100%	2:1 Load Mismatch Tolerance	LMT	--	--	--	$V_{CC}=V1, PW=PW1, DF=DF1, T_F=25\pm5^\circ C, P_{IN}=P_{IN}, F=F1, F2, F3.$ Rotate 2:1 output VSWR through 360° phase.
BD	Pulse Risetime	RT	--	150	ns	$V_{CC}=V1, PW=PW1, DF=DF1, T_F=25\pm5^\circ C, P_{IN}=P_{IN}, F=F1, F2, F3.$ Measure between 10% and 90% detected power points.
--	--	--	--	--	--	--
--	--	--	--	--	--	--
--	--	--	--	--	--	--
--	--	--	--	--	--	--
--	--	--	--	--	--	--
--	--	--	--	--	--	--
--	--	--	--	--	--	--
--	--	--	--	--	--	--
--	--	--	--	--	--	--
--	--	--	--	--	--	--
--	--	--	--	--	--	--
--	--	--	--	--	--	--
--	--	--	--	--	--	--
--	--	--	--	--	--	--
--	--	--	--	--	--	--
--	--	--	--	--	--	--
Note	$V1 = 32V; PW1 = 300\mu s; DF1 = 10\%; P_{IN} = 2.6W; F1 = 3.10 \text{ GHz}, F2 = 3.25 \text{ GHz}, F3 = 3.40 \text{ GHz}.$					
Note	$T_F =$ Device flange temperature. Screen 'BD' = parameter qualified By Design.					

**PALLET DIMENSIONAL OUTLINE DRAWING**



**50Ω RF TEST FIXTURE**



HEATSINK NOT SHOWN  
DRAWINGS AVAILABLE UPON REQUEST

**DEFINITIONS**

<b>Data Sheet Status</b>	
Proposed Specification	This data sheet contains proposed specifications.
Preliminary Specification	This data sheet contains specifications based on preliminary measurements and data.
Product Specification	This data sheet contains final product specifications.
<b>Maximum Ratings</b>	
Stress above one or more of the maximum ratings may cause permanent damage to the device. These are maximum ratings only and operation of the device at these or at any other conditions above those given in the characteristics sections of the specification is not implied. Exposure to maximum values for extended periods of time may affect device reliability.	

**WARNING**

<b>Product and environmental safety - toxic materials</b>
This product contains beryllium oxide. The product is entirely safe provided that the BeO base is not damaged. All persons who handle, use or dispose of this product should be aware of its nature and of the necessary safety precautions. After use, dispose of as chemical or special waste according to the regulations applying at the location of the user. It must never be thrown out with general or domestic waste.

**DISCLAIMER**

Integra Technologies Inc. makes no warranty, representation or guarantee regarding the suitability of its products for any particular purpose, nor does Integra Technologies Inc. assume any liability arising out of the application or use of any product or circuit, and specifically disclaims any and all liability, including without limitation consequential or incidental damages. Integra Technologies Inc. products are not designed for use in life support appliances, devices, or systems where malfunction of these products can reasonably be expected to result in personal injury. Integra Technologies Inc. customers using or selling these products for use in such applications do so at their own risk and agree to fully indemnify Integra Technologies Inc. for any damages resulting from such improper use or sale.
--